



FOR LEASE | INDUSTRIAL | OFFICE

# 16TH AVENUE AND CACHET WOODS COURT

Markham, ON

Conveniently located on the northwest corner of 16<sup>th</sup> Avenue and Cachet Woods Court, this site provides an excellent opportunity for office space or prestige industrial space with signage opportunity facing 16<sup>th</sup> Avenue.

## STATS & FACTS

### AVAILABLE UNIT:

Site Area :

1.1 acres

Build To Suit :

Up to 28,750 sq. ft.

Intersection :

16th Avenue and Cachet Woods Court

Average Household Income  
Benchmark (for Ontario) :

\$91,811

DEMOGRAPHICS  
NOT AVAILABLE



## CONTACT

### CONDOR PROPERTIES

Corporate Office  
1500 Highway 7  
Concord, ON L4K 5Y4

905 907 1600  
info@condorproperties.ca

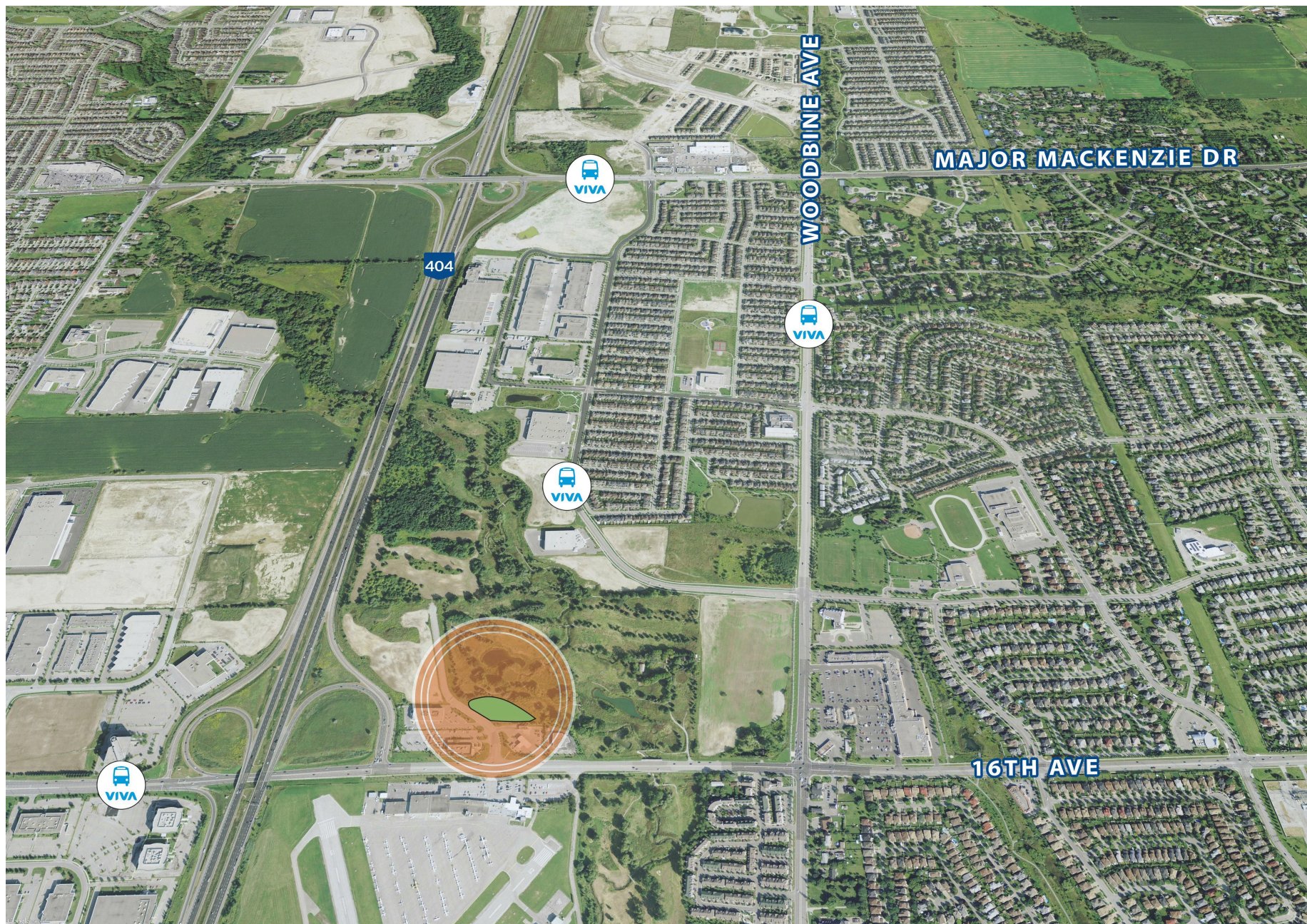
### ADAM SCALE

Director of Leasing  
905 907 1600 ext. 215  
info@condorproperties.ca





## 16TH AVENUE AND CACHET WOODS COURT | INDUSTRIAL | OFFICE



### SITE FEATURES

- Immediate access to both the northbound and southbound ramp of Highway 404 and one highway stop away from the Highway 407.
- Accessible by major public transit systems including the TTC and VIVA.
- Located closely to residential communities.
- Within close proximity to nearby service retail amenities including restaurants, (sit-down and takeout) and financial banking services.

### CONTACT

#### CONDOR PROPERTIES

Corporate Office  
1500 Highway 7  
Concord, ON L4K 5Y4

905 907 1600  
[info@condorproperties.ca](mailto:info@condorproperties.ca)

#### VIVAN VOO

Director of Leasing  
905 907 1600 ext. 215  
[info@condorproperties.ca](mailto:info@condorproperties.ca)